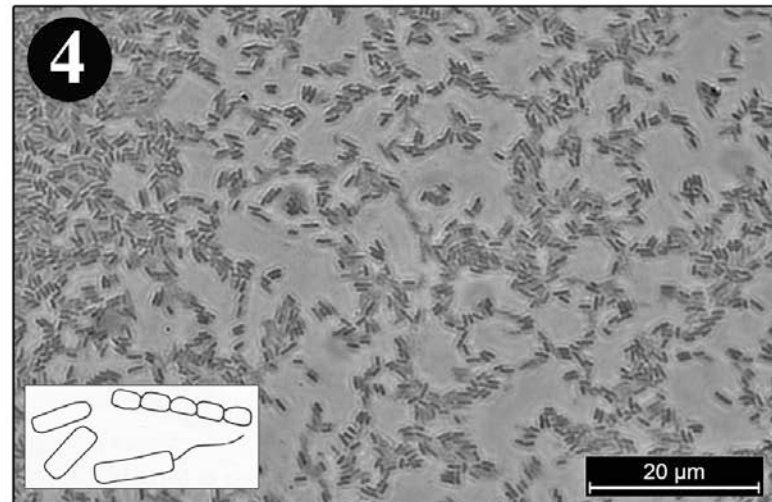
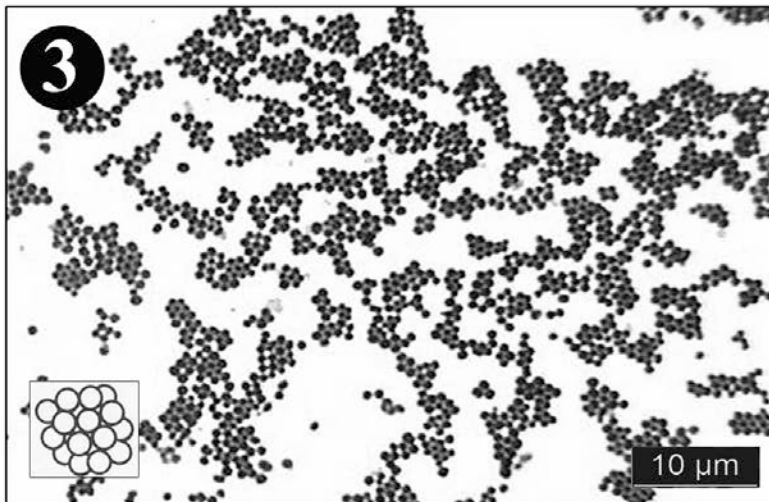
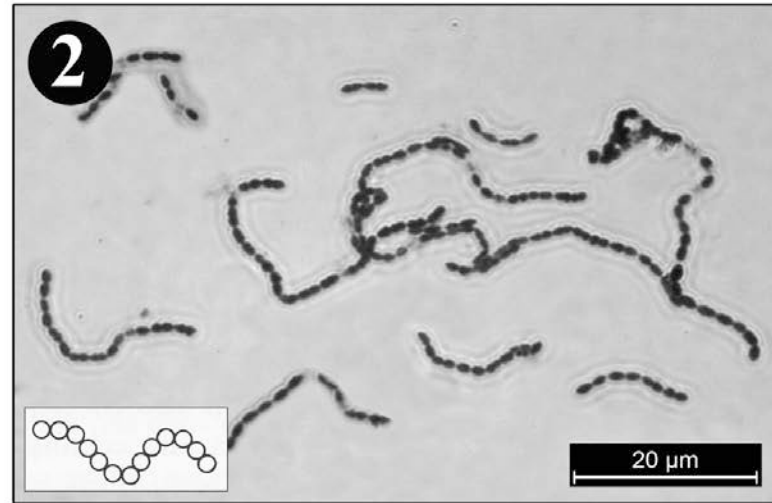
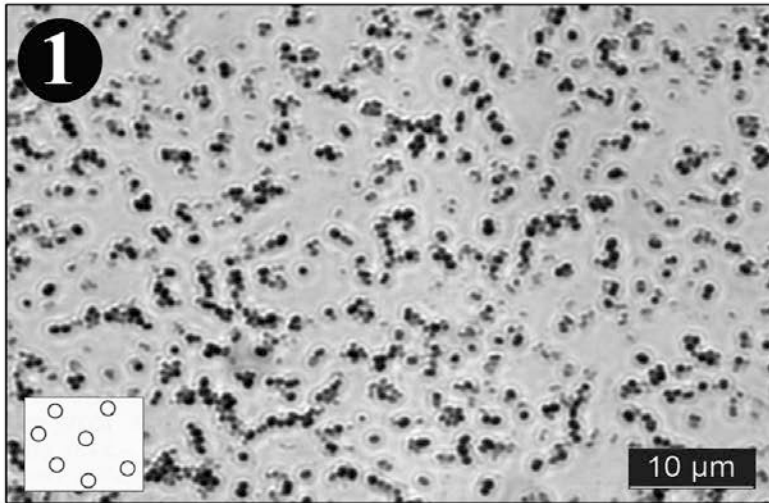
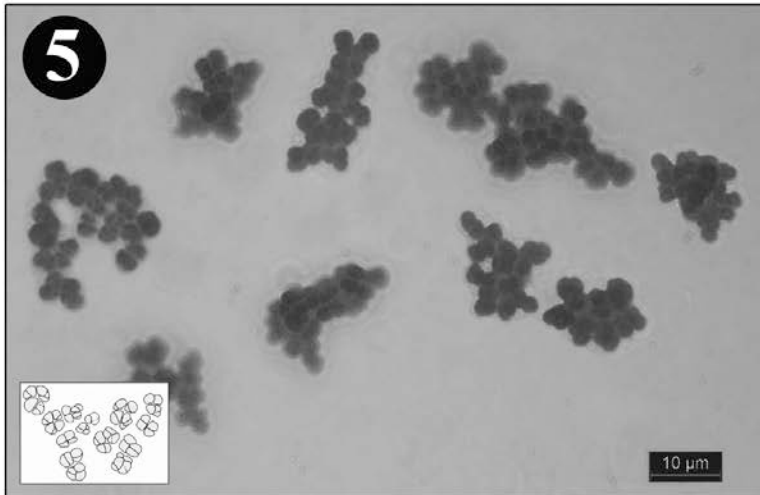


Anhang 1. Bestimmungsschlüssel für Mikroorganismen: Bakterien

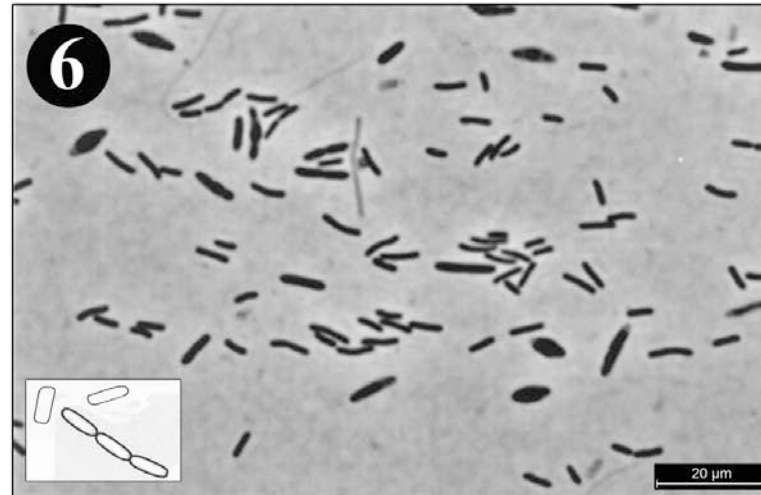


1 Kokken (einzelne kugelförmige Zellen); **2 Streptokokken** (Ketten kugelförmiger Zellen);
3 Staphylokokken (Grüppchen kugelförmiger Zellen); **4 Stäbchen /Bazillen** (einzellig oder in Ketten)

Archebakterien

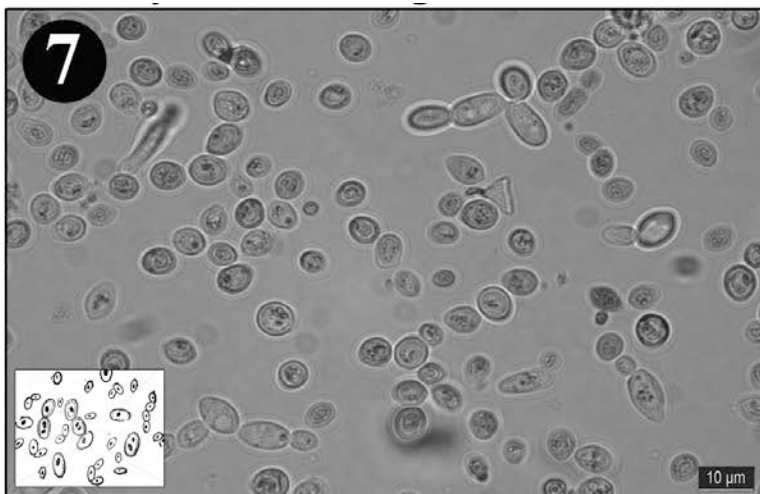


5 **Sarcina** (Grüppchen kugelförmiger Zellen);

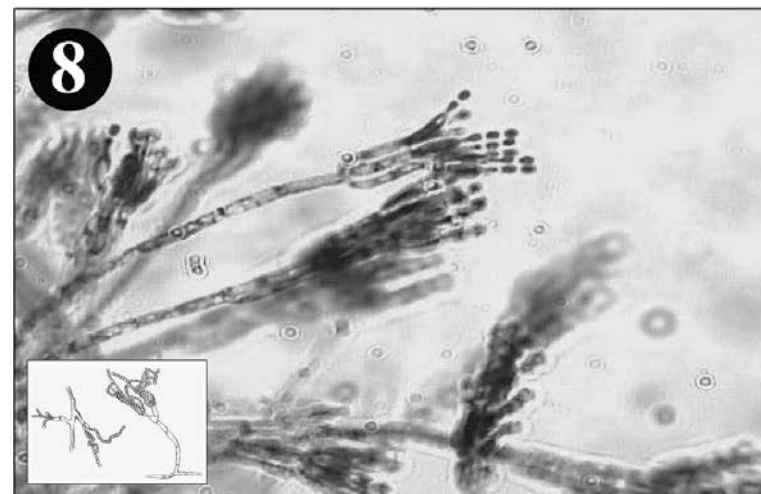


6 **Methanosaeta** (einzelne Stäbchen oder Ketten von Stäbchen)

Eukaryota / Pilze



7 **Hefe** (oval geformte Zellen);



8 **Schimmel** (mehrzellige Mikroorganismen mit Sporen)